

# APP USER MANUAL



# Bluesun Solar Co., Ltd

Add:1499 Zhenxing Road, Shushan District,230031 Hefei,China

Tel:+86 (158) 5821 3997

Fax:+86 (551) 6565 2651

E-mail:info@bluesunpv.com

Http://www.bluesunpv.com



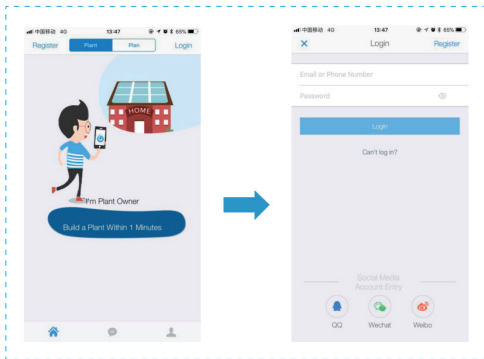
## 1. Download APP

iPhone : Search "SOLARMAN" in Apple Store.

Android : Search "SOLARMAN" in Google Play.

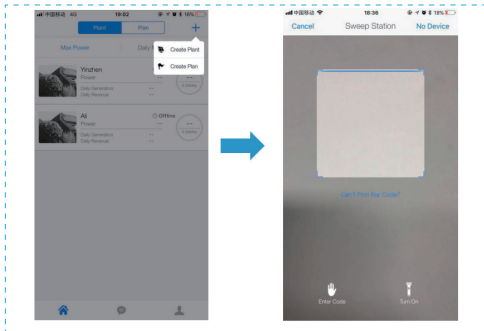
## 2. Register

Click [Register] to create new account. You can use email to register.



### 3. Create Plant

3.1 Click [+] and select [Create Plant]. Then scan the serial number of the stick logger, or manually enter the serial number.



3.2 Edit plant information.

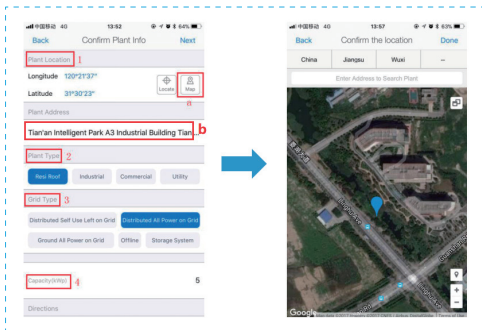
(1) Confirm your plant location (GPS function will automatically determine the plant site; if you want to modify the location, click the "map" icon, and then manually enter the address in box b)

(2) Select your plant type

(3) Select your grid type

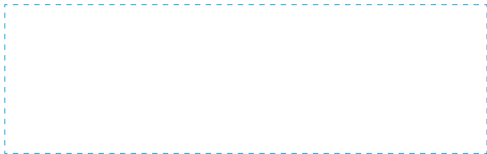
(4) Fill in plant capacity

(You may keep the default settings in the rest of blank because APP has received local electricity prices and subsidies)

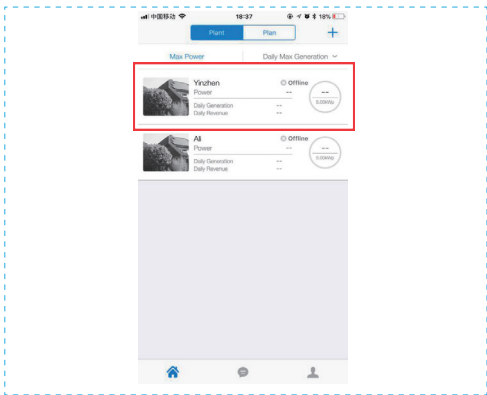


### 3.3 Input Plant Name

It is suggested to create a plant name like "location + name + capacity" (e.g., Wuxi IGEN 8.1 KW), then click [Done].

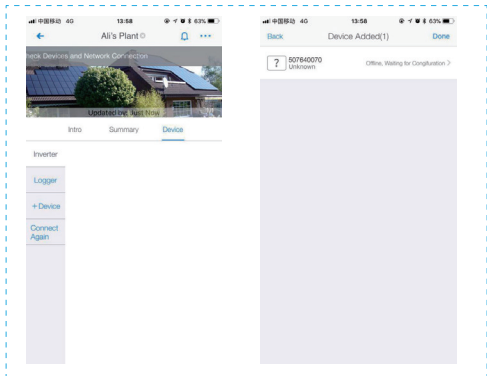


3.4 Now you can see your new plant on the homepage.



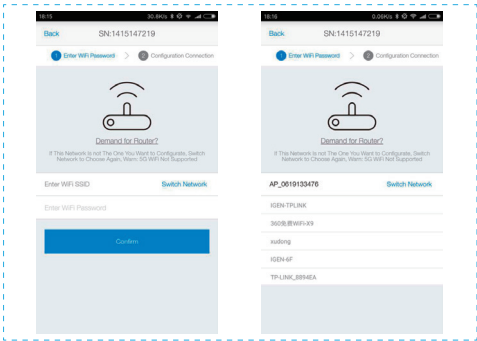
## 4. WiFi Connection Configuration

Select the plant and click [Connect Again] in the tab [Device]. Select your device and click [Done] to the next step.

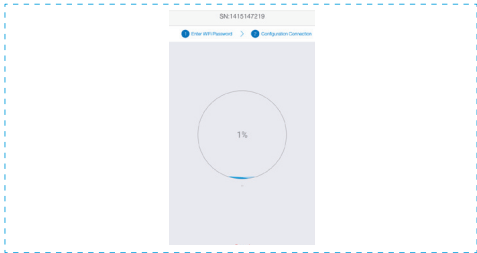


### Configuration (for Android user)

(1) APP will automatically get your WiFi network, so you need to enter your WiFi password to continue the configuration. If the network is not accurate, select [switch network], then find or manually enter the network ID.

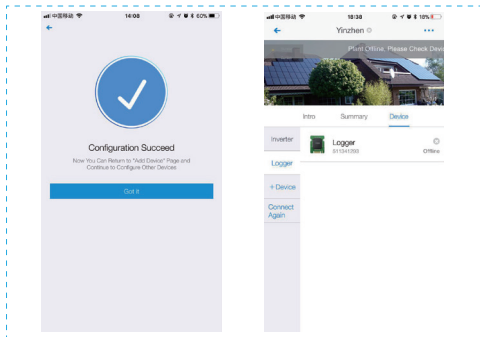


(2) The connection will automatically start after connect the network.



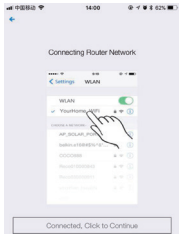
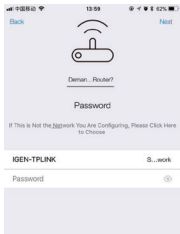


(3) It normally takes 3-5 minutes to configure successfully. Then, you can go back to tab [Device] and click [+Device] to add more devices.

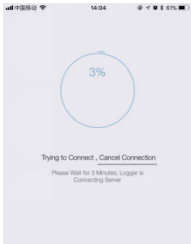
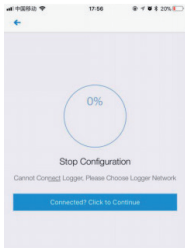


### Configuration (for iOS user)

(1) APP will automatically get your WiFi network, so you need to enter your WiFi password to continue the configuration. If the network is not accurate, select [switch network], then find or manually enter the network ID.



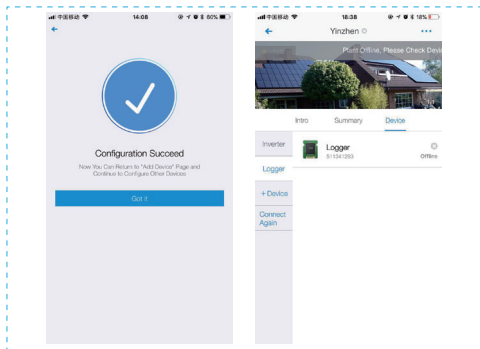
(2) Go to iPhone's [Network Settings] interface, and select the stick logger's network AP\_XXXX(S/N). Then return to SOLARMAN APP, the stick logger will start to configure.



## Notice

If it is unable to find an AP\_XXXXX(S/N) in wireless network list, please make sure to shorten the distance between WiFi routers and Stick Logger to under 10 meters. The connection or setting may appear problem, if you have repeat the above steps and still cannot find the AP\_XXXXX. Please follow the Logger Manual for troubleshooting or contact our Customer Centre.

(3) It normally takes 3-5 minutes to configure successfully. Then, you can go back to tab [Device] and click [+Device] to add more devices.



**If the configuration fails, the reasons may be:**

1. Router password is wrong. Please click [Retry] and check the password.
- 2.The router's network signal is weak and the logger is too far away from the router. Please put the router closer to the logger.
- 3.Click too fast during the Logger's AP connection. Please wait a few seconds and then jump to the configuration after Logger's AP is connected.

**If you meet following situations, please reconfigure logger network :**

- 1.Change router
- 2.Change WiFi password
- 3.Change router's SSID
- 4.Enterprise routers may restrict WiFi connectivity.